

Mojave Desert A.W.A.C.

# Prototypical Front Yard

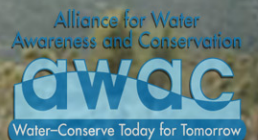
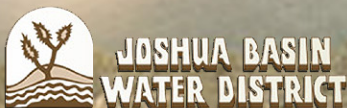
Desert Ranch Front Yard Landscape



*Original Landscape*



*New Water-Efficient Landscape*



# Planting Palette

## Trees



**Joshua Tree**  
(*Yucca brevifolia*)



**Tenaza**  
(*Pithecellobium pallens*)



**Screwbean Mesquite**  
(*Prosopis pubescens*)



**Desert Willow**  
(*Chilopsis linearis*)



**California Juniper**  
(*Juniperus californica*)

## Native Transition Zone



**Creosote**  
(*Larrea tridentata*)



**Brittlebush**  
(*Encelia farinosa*)



**Four-Wing Saltbush**  
(*Atriplex canescens*)



**Agave**  
(*Agave parryi*)



**Beavertail**  
(*Opuntia basilaris*)



**Cholla**  
(*Opuntia bigelovii*)

## Desert Shrub Mix



**Texas Ranger**  
(*Leucophyllum frutescens*)



**Desert Lavender**  
(*Hyptis emoryi*)



**Mojave Yucca**  
(*Yucca schidigera*)



**Hollyleaf Cherry**  
(*Prunus ilicifolia*)



**California Buckwheat**  
(*Eriogonum fasciculatum*)



**Paper Flower**  
(*Psilostrophe tagentina*)



**Desert Marigold**  
(*Baileya multiradiata*)



**Desert Mallow**  
(*Sphaeralcea ambigua*)



**Blackfoot Daisy**  
(*Melapodium leucanthum*)



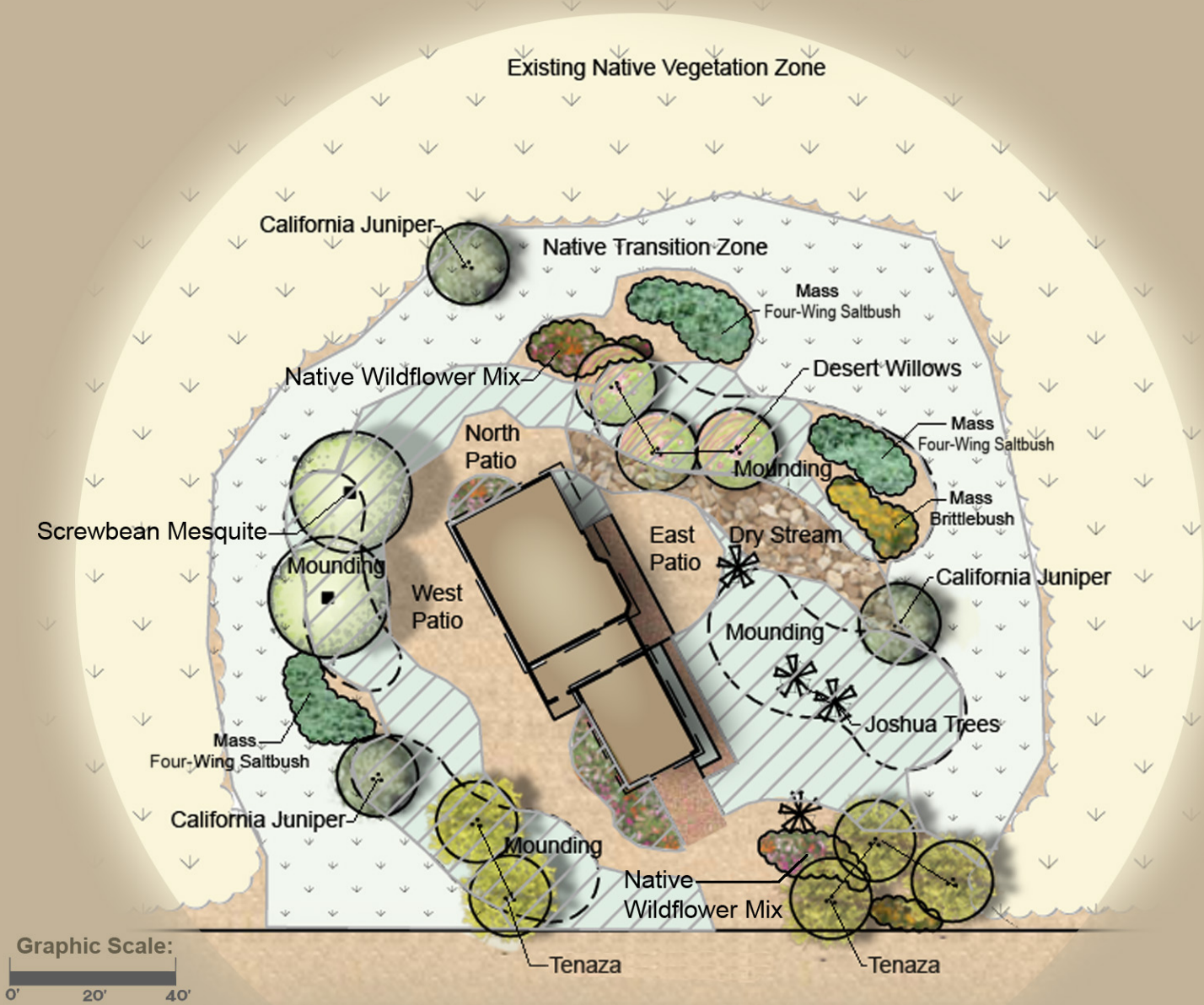
**Desert Sage**  
(*Salvia dorrii*)



**Ocotillo**  
(*Fouquieria splendens*)



# Front Yard Planting Plan



Existing Native Landscape



Native Plants Transition Zone



Desert Shrub Mix

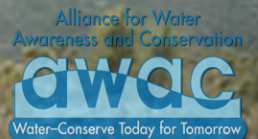
## Landscape Narrative

The Desert Ranch Garden aims for low maintenance. Many beautiful and drought-tolerant native plants are available to create a garden that can substantially minimize the cost in time, water, and fertilizer involved in maintaining an exotic landscape. You eventually can even have a totally maintenance-free landscape. Informal landscapes are usually easier and less costly to maintain.

If your property is surrounded by undisturbed natural environment, allow a "buffer" of sporadically placed native plants to act as a transition zone into the native vegetation around your lot. This will visually "pull" everything together, and create a garden with no borders.



JOSHUA BASIN  
WATER DISTRICT



# Drip Irrigation

Drip irrigation can help you use water efficiently!



Smart Controller  
Using Real Time  
Weather Data



Gate Valve



Automatic Control Valve  
(Use Valve, Pressure Regulator,  
and Filter for Drip Zones.)



In-Line Check Valve  
(Use on all slope areas  
and lowest heads)



Pressure-Compensating  
Emitters



Fixed-Flow  
Bubbler



Self-Flush End Valve

