

Mojave Desert A.W.A.C.

Prototypical Front Yard

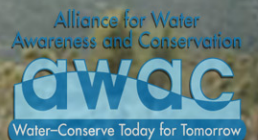
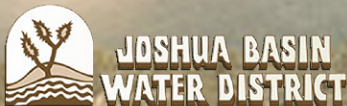
Rock Garden / Slope Front Yard Landscape



Original Landscape



New Water-Efficient Landscape



Planting Palette

Trees



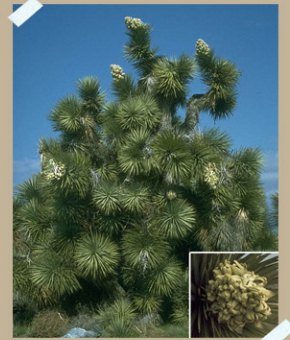
Tenaza
(*Pithecellobium pallens*)



Screwbean Mesquite
(*Prosopis pubescens*)



Desert Willow
(*Chilopsis linearis*)



Joshua Tree
(*Yucca brevifolia*)

Large Shrubs



Toyon
(*Heteromeles arbutifolia*)



Creosote
(*Larrea tridentata*)



Four-Wing Saltbush
(*Atriplex canescens*)

Medium Shrubs



Cassia
(*Cassia artemisioides*)

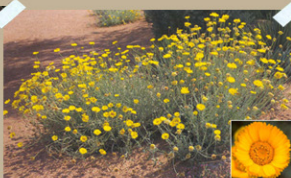


Chuparosa
(*Justicia californica*)



Brittlebush
(*Encelia farinosa*)

Small Shrubs



Desert Marigold
(*Baileya multiradiata*)



California Buckwheat
(*Eriogonum fasciculatum*)



Candelilla
(*Euphorbia antisiphilitica*)

Accents

Red Yucca
(*Hesperaloe parvifolia*)



Desert Spoon
(*Dasylirion wheeleri*)



Artichoke Agave
(*Agave parryi*)



Ocotillo
(*Fouquieria splendens*)



Beavertail
(*Opuntia basilaris*)



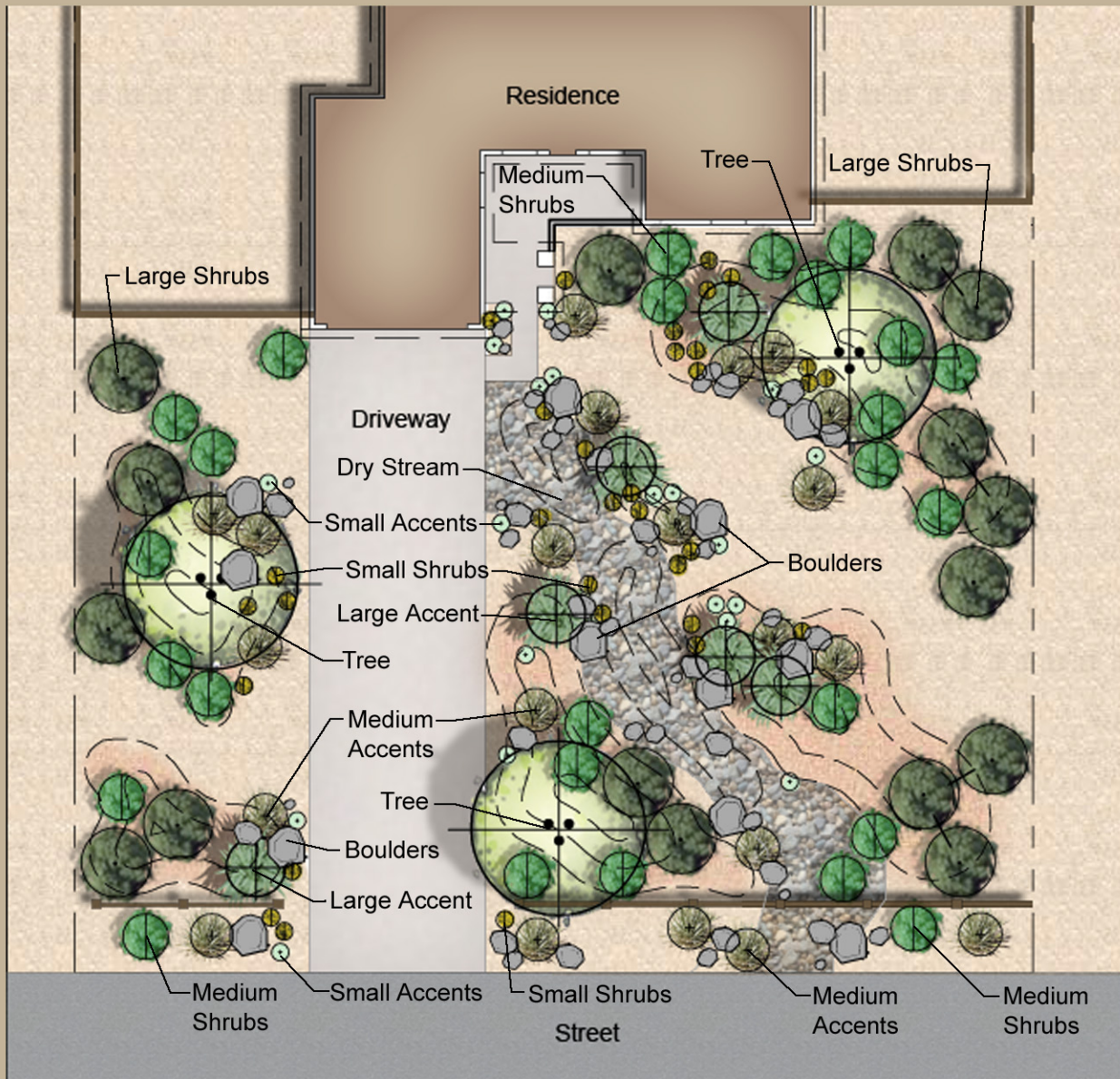
Century Plant
(*Agave americana*)



Golden Barrel
(*Echinocactus grusonii*)

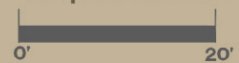


Front Yard Planting Plan

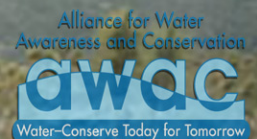
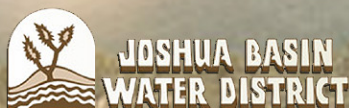


Landscape Narrative

Graphic Scale:



This garden style focuses on the use of cacti, native shrubs and groundcovers, and lots of boulders to help retain the soil along slopes. This treatment creates terraces which slow the speed of water flowing downslope and prevents erosion. Cobble can also be used along slopes to help disrupt the flow of water, and a dry stream can help collect and direct heavy flows in a manageable way.



Drip Irrigation

Drip irrigation can help you use water efficiently!



Smart Controller
Using Real Time
Weather Data



Gate Valve



Automatic Control Valve
(Use Valve, Pressure Regulator,
and Filter for Drip Zones.)



In-Line Check-Valve
(Use on all slope areas
and lowest heads)



Fixed-Flow
Bubbler



Pressure-Compensating
Emitters



Self-Flushing End Valve

