

Mojave Desert A.W.A.C.

# Prototypical Front Yard

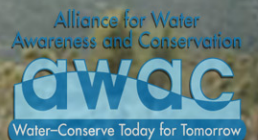
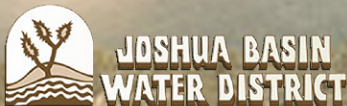
Mediterranean Front Yard Landscape



*Original Landscape*



*New Water-Efficient Landscape*



# Planting Palette

## Trees



**Olive**  
(*Olea europea*)



**Aleppo Pine**  
(*Pinus halepensis*)



**Crape Myrtle**  
(*Lagerstroemia indica*)

## Large Shrubs



**Texas Olive**  
(*Cordia boissieri*)



**Sweet 16 Waxflower**  
(*Chamelaucium*)



**Texas Ranger**  
(*Leucophyllum frutescens*)



**Hollyleaf Cherry**  
(*Prunus ilicifolia*)

## Medium Shrubs



**Rosemary**  
(*Rosmarinus officinalis*)



**Rockrose**  
(*Cistus purpureus*)



**Lavender**  
(*Lavandula stoechas*)



**White Sage**  
(*Salvia apiana*)



**Cleveland Sage**  
(*Salvia clevelandii*)

## Small Shrubs



**Penstemon**  
(*Penstemon eatonii*)



**Bush Morning Glory**  
(*Convolvulus cneorum*)



**Artemisia**  
(*Artemisia ludoviciana*)



**Ground Rosemary**  
(*Rosmarinus o. 'Irene'*)

## Accents



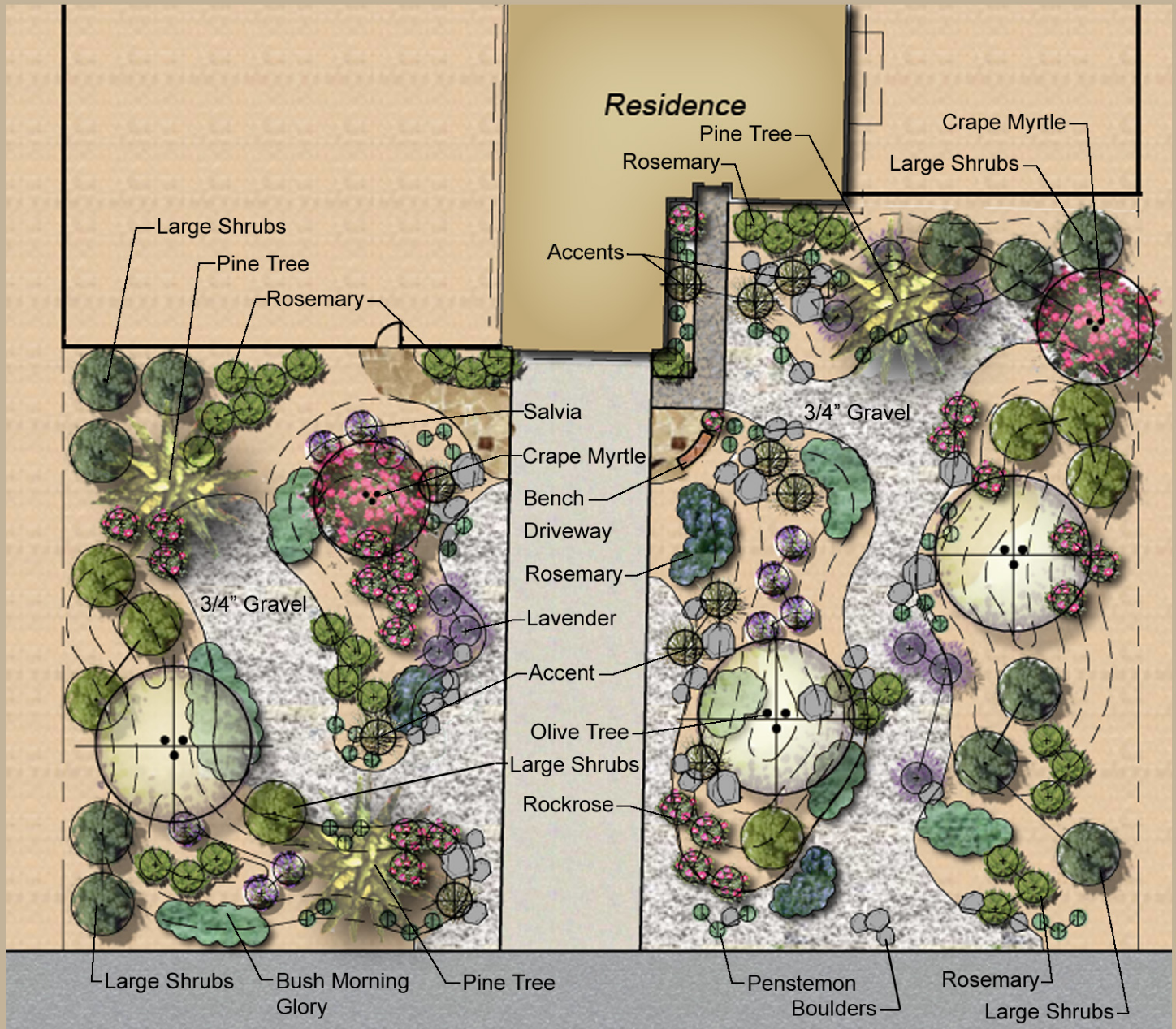
**Century Plant**  
(*Agave americana*)



**Blue Bear Grass**  
(*Nolina nelsonii*)



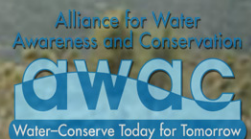
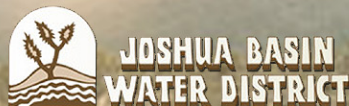
# Front Yard Planting Plan



## Landscape Narrative



In the High Desert, there are many desert-adapted plants that can be used to achieve a Mediterranean look. Classic plants like the Olive tree, Lavender, and Rosemary may be used. Additional water-wise plants can be used which display attractive leaves and flowers. Arrange plants in groups so that their color and texture can be appreciated from afar.



# Drip Irrigation

Drip irrigation can help you use water efficiently!



Smart Controller  
Using Real Time  
Weather Data



Gate Valve



Automatic Control Valve  
(Use Valve, Pressure Regulator,  
and Filter for Drip Zones.)



In Line Check-Valve  
(Use on all slope areas  
and lowest heads)



Self-Flushing End Valve



Pressure-Compensating  
Emitters



Fixed-Flow  
Bubbler

